

Insights into the Cambridge Angels

Peter Cowley

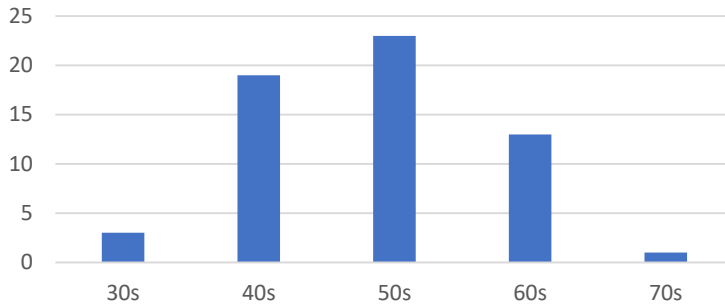
**CAMBRIDGE
ANGELS**



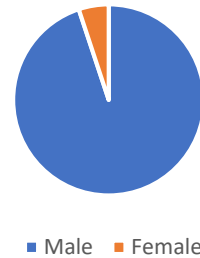
WELCOME TO CAMBRIDGE ANGELS

Cambridge Angels – founded 2001

Age distribution

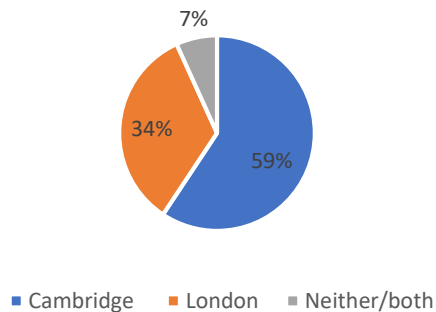


95% male

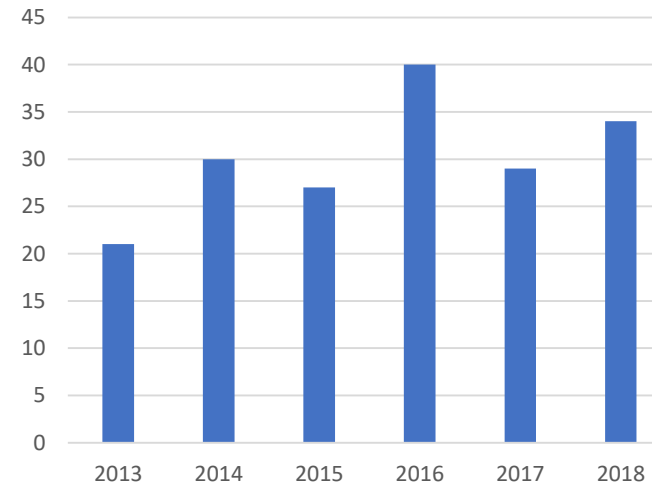


68% are exited tech entrepreneurs (40 members from 59)

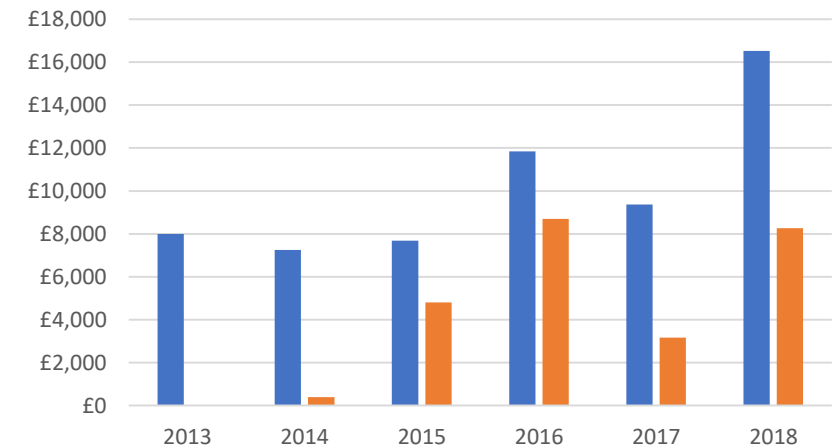
Location



Total no. of rounds



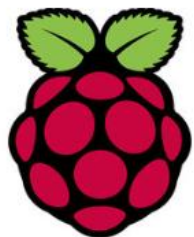
Amount invested - orange=VC members (2018 extrapolated)



CONFIDENTIAL

Companies that CAs have founded

CAMBRIDGE ANGEL FOUNDED COMPANIES



Codian -> Tandberg
Active Hotels -> booking.com
CSR -> Qualcomm
Alphamosaic -> Broadcomm

Exits from CA funded companies

RECENT EXITS



GRAPESHOT



3WAY NETWORKS



ALERT ME



CAMBRIDGE CMOS
SENSORS

To:
Oracle
British Gas
AMS (Austria)
Huawei
Google
Apple
etc



CRONTO



LINTBELLS



MONICA
HEALTHCARE



OVAL MEDICAL
TECHNOLOGIES



phoneticarts

Team



Peter Cowley



John Yeomans



Robert Sansom



David Cleevely



Emmi Nicholl

Deal Sorcerer

- Founded in 2001 by Robert Sansom and David Cleevely
- Currently chaired by Peter Cowley, and previously by John Yeomans
- 56% based in Cambridge, 38% in London and 7% other regions
- 68% of our members are exited entrepreneurs
- NO charges to entrepreneurs, angels pay all costs

Target entrepreneurs



The effect of the University

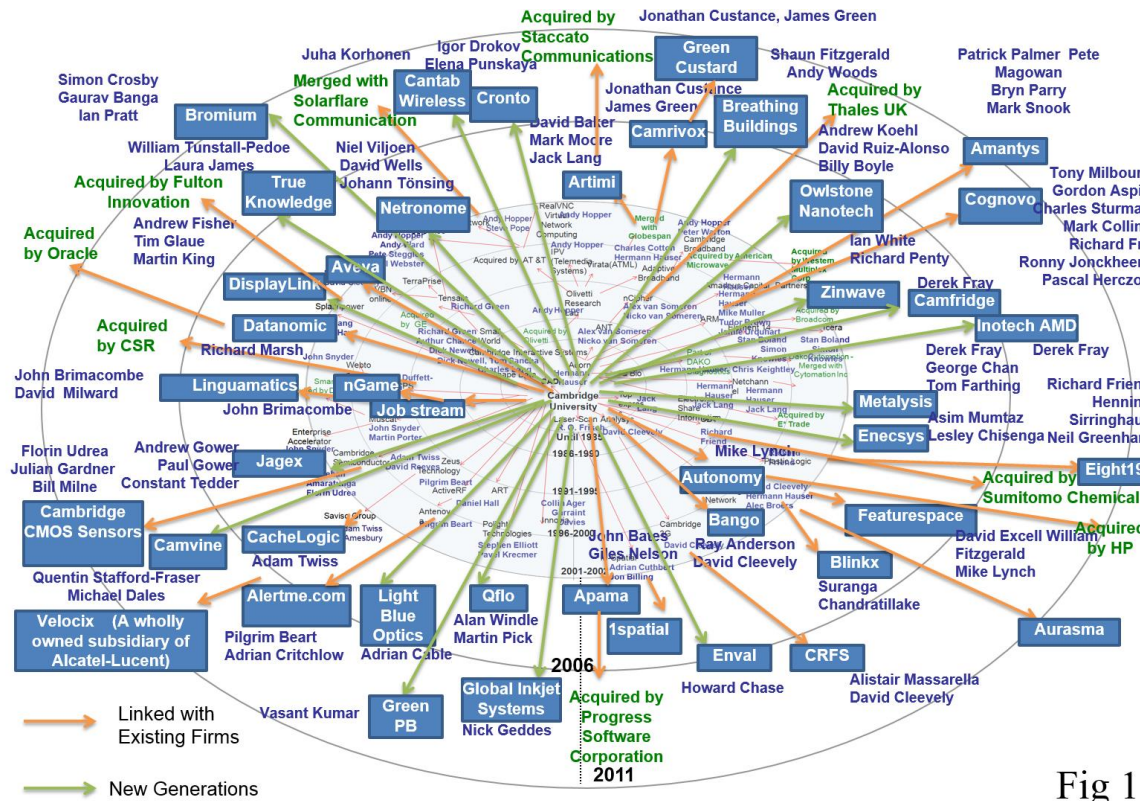


Fig 1

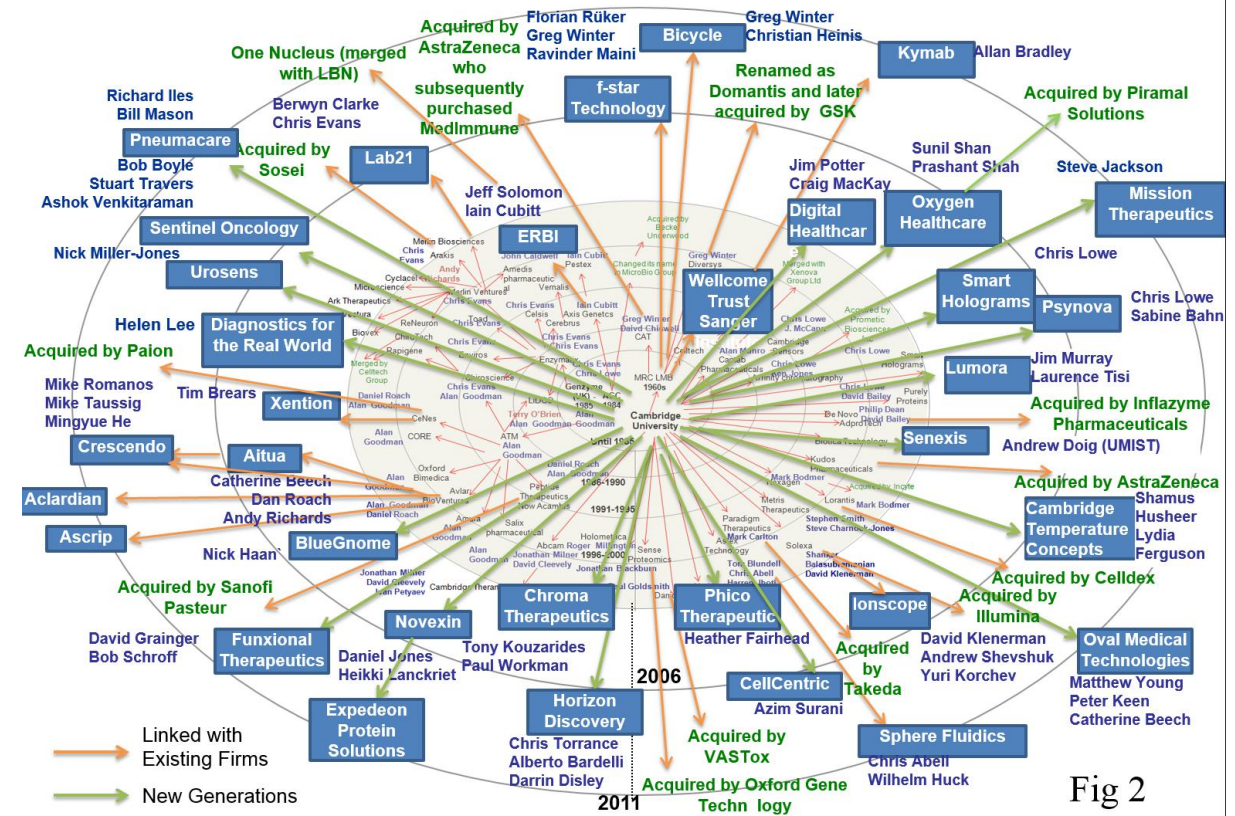
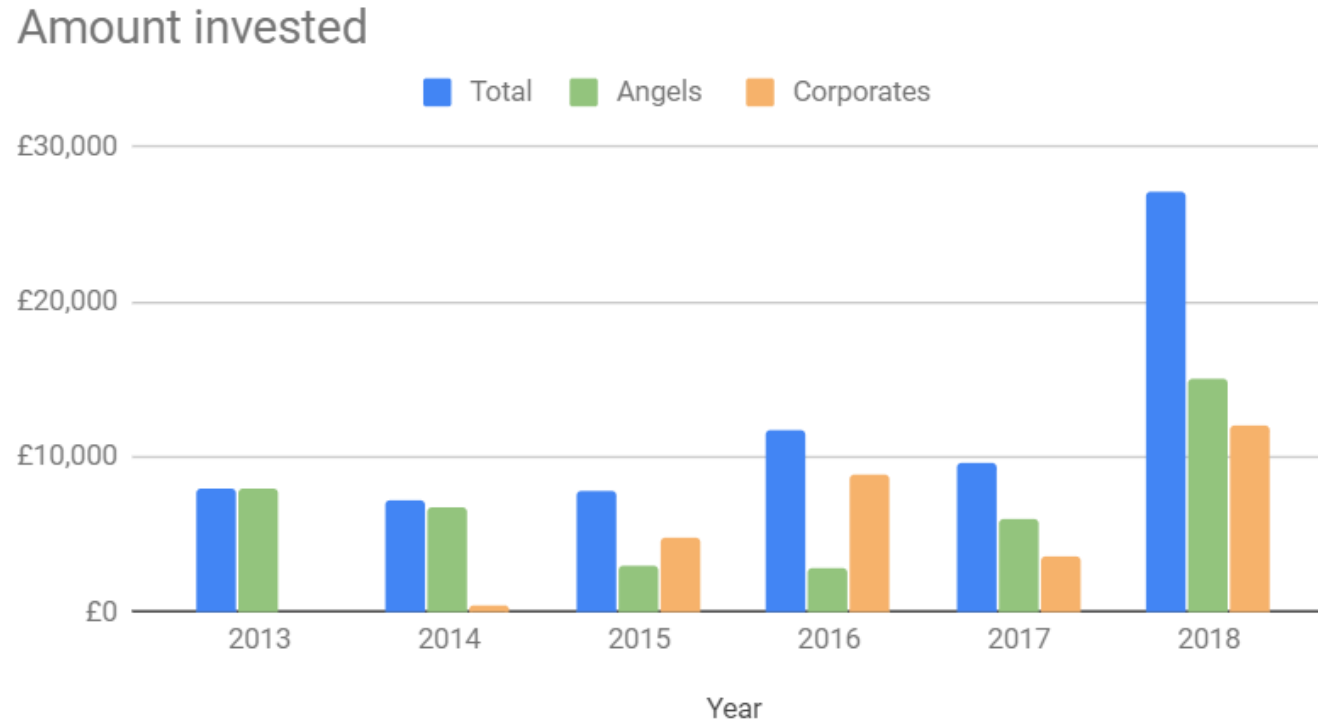


Fig 2

Period: 2002 to 2011. Copyright Cambridge University

Invested well over £100M in 17 years



- Investments span across a total of more than 30 rounds per year on average
- 28 events per year – pitching, education, social
- In 2018, we invested just over £28m in 40 deals, both new and follow-on
- We fill around 30% of a round on average, although commonly all of the first round